

HARDTAPE[®] BAY

USB 2.0



Installation and Operation Manual

AUDAVI CORPORATION

1430 Tully Road, Suite 416 • San Jose, CA 95122 USA
Phone: 408-947-8300 • Fax: 408-947-8333
CAGE: 3DJV2 DODAAC: Q92265

Email: info@audavi.com
Corporate Website: www.audavi.com



©COPYRIGHT 2002—2010 AUDAVI CORPORATION.
ALL BRAND AND PRODUCT NAMES ARE REGISTERED TRADEMARKS OF THEIR RESPECTIVE OWNERS.

-87057001E-

Contacting Technical Support

AUDAVI technical support can be reached as follows:

Telephone: 866-947-0830

Email: support@audavi.com

FCC Warning Statements:

Note: This equipment has been tested and found to comply with the limits for Class B digital devices, pursuant to Part 15 of the FCC Rules. These limits are designed to provide reasonable protection against harmful interference in a residential/office installation. This equipment generates, uses and can radiate radio frequency energy and if not installed and used in accordance with the instructions, may cause harmful interference to radio communications. However, there is no guarantee that interference will not occur in a particular installation. If this equipment does cause harmful interference to radio or television reception, which can be determined by turning the equipment off and on, the user is encouraged to try to correct the interference by one or more of the following measures:

- Reorient or relocate the receiving antenna.
- Increase the separation between the equipment and receiver.
- Connect the equipment into an outlet on a circuit different from that to which the receiver is connected.
- Consult the dealer or an experienced Radio/TV technician for help.

CAUTION: Changes or modifications not expressly approved by the party responsible for compliance could void the users authority to operate the equipment.

A windows dialog box opens to **Safely Remove Device**. Highlight the HardTape device and then click on the **Stop** Button. You can now safely remove the HardTape cartridge from the bay.

MAC OS - Simply drag the icon representing the HardTape from the desktop to the trash to disable/eject the volume.

Table of Contents

Important Safeguards.....	1
HardTape Bay Part List.....	2
Hardware Requirements.....	2
System Requirements.....	2
Installing HardTape Bay.....	3
Using HardTape Bay.....	10
Contacting Technical Support.....	12
FCC Warning Statements.....	12

Important Safeguards

The following instructions pertain to the risk of fire, electric shock or bodily injury. Please read all of these instructions carefully before using this product.

1. Follow all the instructions and cautions marked on this product or included in the manual.
2. Make sure all power to your computer system is **turned off and disconnected** before installing the HardTape Bay. Failure to do so can result in electrical shock.
3. Never use objects other than AUDAVI approved products in HardTape Bay as this may damage HardTape Bay or the object inserted.
4. Do not disassemble or try to repair HardTape Bay. Doing so voids your warranty.

Using HardTape Bay

1. Once the HardTape Bay is installed, turn on your PC.
2. Install PCI card drivers, if necessary.
3. Insert your HardTape cartridge into the HardTape Bay.

Windows XP/ME/2000 –MAC OS 8.6+ - Linux 2.6+ - new hardware will be detected and the drivers will automatically be installed. The HardTape cartridge will appear as an additional drive. **No CD is required.**

4. To remove the HardTape cartridge, you must disable your USB connection. You should not remove the cartridge while the LED activity light is blinking as this could cause data loss.

Windows XP - Windows XP has an option to optimize USB devices for “Quick Removal”. If this is enabled you may push the button on the bay to eject the cartridge. (For more information see Microsoft website).

Windows XP/2000 - If the “Quick Removal” option is not enabled, you must select the Unplug or Eject Hardware icon from the lower right Windows icon bar to disable your connection. Note: The icon may say Safely Remove Hardware.



6. Attach an existing system power cable to the HardTape Bay (see Figure 13). The power connector is “D” shaped to correctly align the connector (see Figure 14). The power cables have 4 wires (1 red, 2 black and 1 yellow) with a plug on the end. You will see them attached to various internal devices such as your hard drive and CD-ROM. You should have at least one free plug. If you don’t, then you will need a “Y” connector that attaches to any power plug converting it to two connectors.



Figure 13

The HardTape Bay hardware installation is now complete. Replace the PC cover and reattach the external power cable.



Figure 14

HardTape Bay Part List:

- HardTape Bay
- Four M3 Mounting Screws
- Installation Manual
- 5-pin USB header or A to mini-B USB Cable

Hardware Requirements:

- Available floppy bay or 5-1/4” drive bay
- Philips head screw driver

Additional items that may be required:

- Your computer system’s User Manual
- 5-1/4” Mounting Bracket Kit
- Power “Y” connector
- USB 2.0 PCI Card

System Requirements:

A PC using one of the following operating systems:

- Windows XP/2000/ME/98SE
- Mac 8.6 or higher
- Linux Kernel 2.6 or higher.

Hardware Installation:

Always refer to your PC’s Instruction Manual when installing HardTape Bay. If you are unsure of performing any of the procedures required to install the HardTape Bay, please see your computer dealer for professional installation.

Installing HardTape Bay

1. Power down your PC and any other attached peripherals. Unplug the external power cable connected to your PC. Before touching any electrical components inside your PC, ground yourself by touching the metal part of your PC chassis. This discharges static electricity and prevents any damage to your PC.
2. Remove the PC cover per the manufacturer's instructions and prepare a vacant floppy or 5-1/4 inch bay by removing the faceplate. The faceplate is a plastic cover that can usually be removed by popping it out using a screwdriver or your thumb (see Figure 1). If there is a metal back plate behind the faceplate, you will have to first pry the faceplate off with a screwdriver from the front and then remove the metal back plate by popping it out with a screwdriver.



Figure 1

Warning—Use caution when removing the metal back plate as it may have sharp edges. If you cannot remove it, please *refer to your computer manual for removal instructions.*

4. Slide the HardTape Bay and USB cable into the open slot of your PC (connector end first) until it is flush with the front of the PC. Using the supplied M3 mounting screws, tighten two screws on each side to 3 in-lbs (3.5 kgf-cm) until the HardTape Bay is tight and doesn't move (see Figure 11).

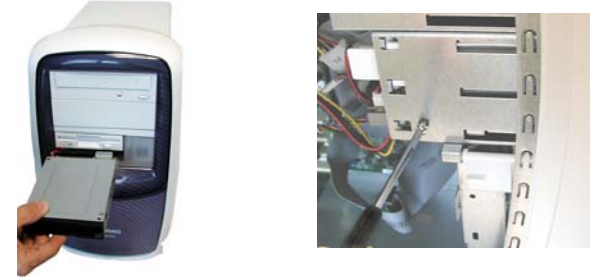


Figure 11

5. Connect the other end of the USB cable into the internal USB connector on the USB 2.0 PCI card (see Figure 12).

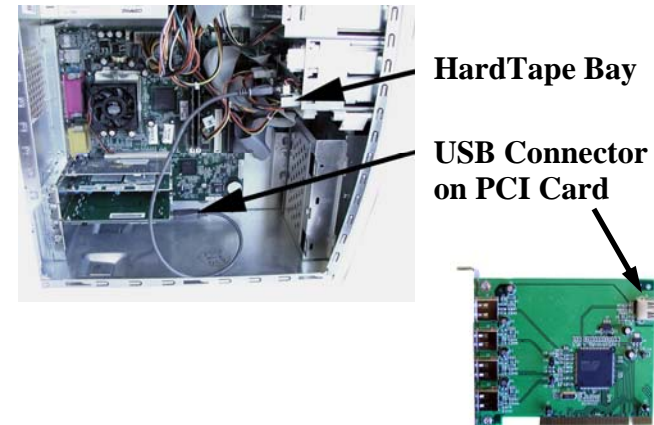


Figure 12

Direct Connect to USB 2.0 PCI Card

1. Remove the USB 2.0 PCI card from its package and find an available PCI card slot on your PC (see Figure 8).



USB 2.0 PCI Card



Available PCI Slot

Figure 8

2. Insert the USB 2.0 PCI card firmly into the available PCI card slot until it snaps into position (see Figure 9).

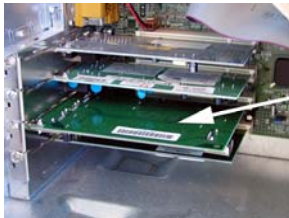


Figure 9

3. Connect the mini-B end of the USB cable into the mini-B connector on the HardTape PCB (see Figure 10).



Figure 10

3. If the HardTape Bay is going into a 5-1/4" bay, then a 5-1/4" mounting bracket will be needed. Kits can be ordered from Audavi (HTS-6500-ADP) or many computer stores / websites will carry this kit (see Figure 2).

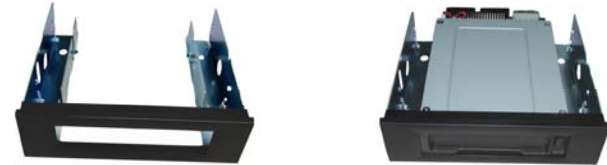


Figure 2

Direct Connect to PC MotherBoard USB Port

If you purchased the HardTape Bay for direct connection to the motherboard USB header then continue following the next steps. If you purchased the HardTape Bay for connection to a USB 2.0 PCI card, then go to the section titled “**Direct Connect to USB 2.0 PCI Card**”.

1. Connect the 5-pin USB cable to the 5-pin connector on the bottom side of the HardTape Bay PCB. Make sure the red wire on the 5-pin USB cable is connected to pin 1 on the 5-pin connector (inside pin; see Figure 3).

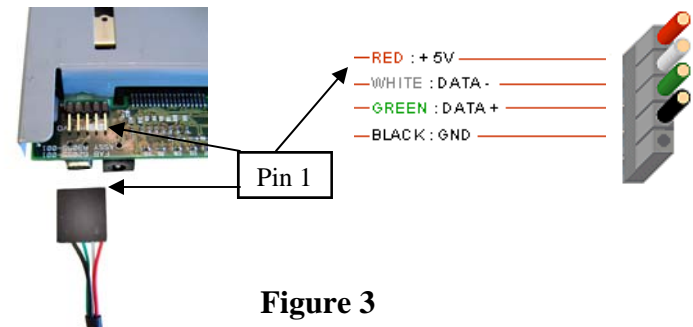


Figure 3

- Slide the HardTape Bay and 5-pin USB cable into the open slot of your PC (connector end first) until it is flush with the front of the PC. Using the supplied M3 mounting screws, tighten two screws on each side to 3 in-lbs (3.5 kgf-cm) until the HardTape Bay is tight and doesn't move (see Figure 4).

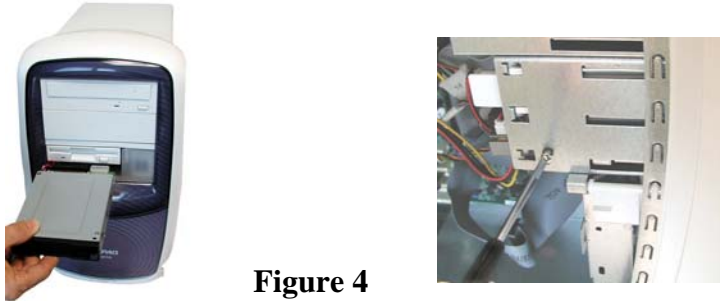


Figure 4

- Locate the USB header connector on the motherboard. On most motherboards, the USB header/pin-out consists of 9 pins arranged in 2 rows, which allows for 2 USB connections (i.e. USB1 and USB2). Normally, the pins for USB1 and USB2 are in separate rows. (4, 5, 8, and 10-pin configurations are also possible. Refer to the motherboard's manual or manufacturer to make sure the pin-out for the USB port connector is as in Figure 5.

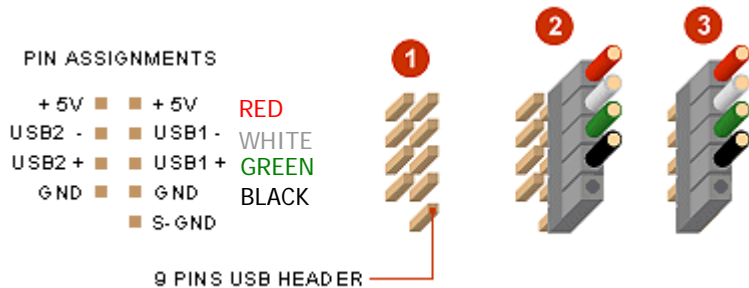


Figure 5

- Connect the 5-pin USB cable to one of the rows of pins on the motherboard header connector. Make sure the red wire on the 5-pin USB cable is connected to Pin 1 on the motherboard connector. For 4, 8, & 9 pin connectors use schematic #2 and for 5, 9, & 10 pin connectors use schematic #3 (see Figure 5).
- Attach an existing system power cable to the HardTape Bay. (see Figure 6). The power connector is "D" shaped to correctly align the connector. The power cables have 4 wires (1 red, 2 black and 1 yellow) with a plug on the end. You will see them attached to various internal devices such as your hard drive and CD-ROM (see Figure 7). You should have at least one free plug. If you don't, then you will need a "Y" connector that attaches to any power plug converting it to two connectors.



Figure 6



Figure 7

The HardTape Bay hardware installation is now complete. Replace the PC cover and reattach the external power cable.